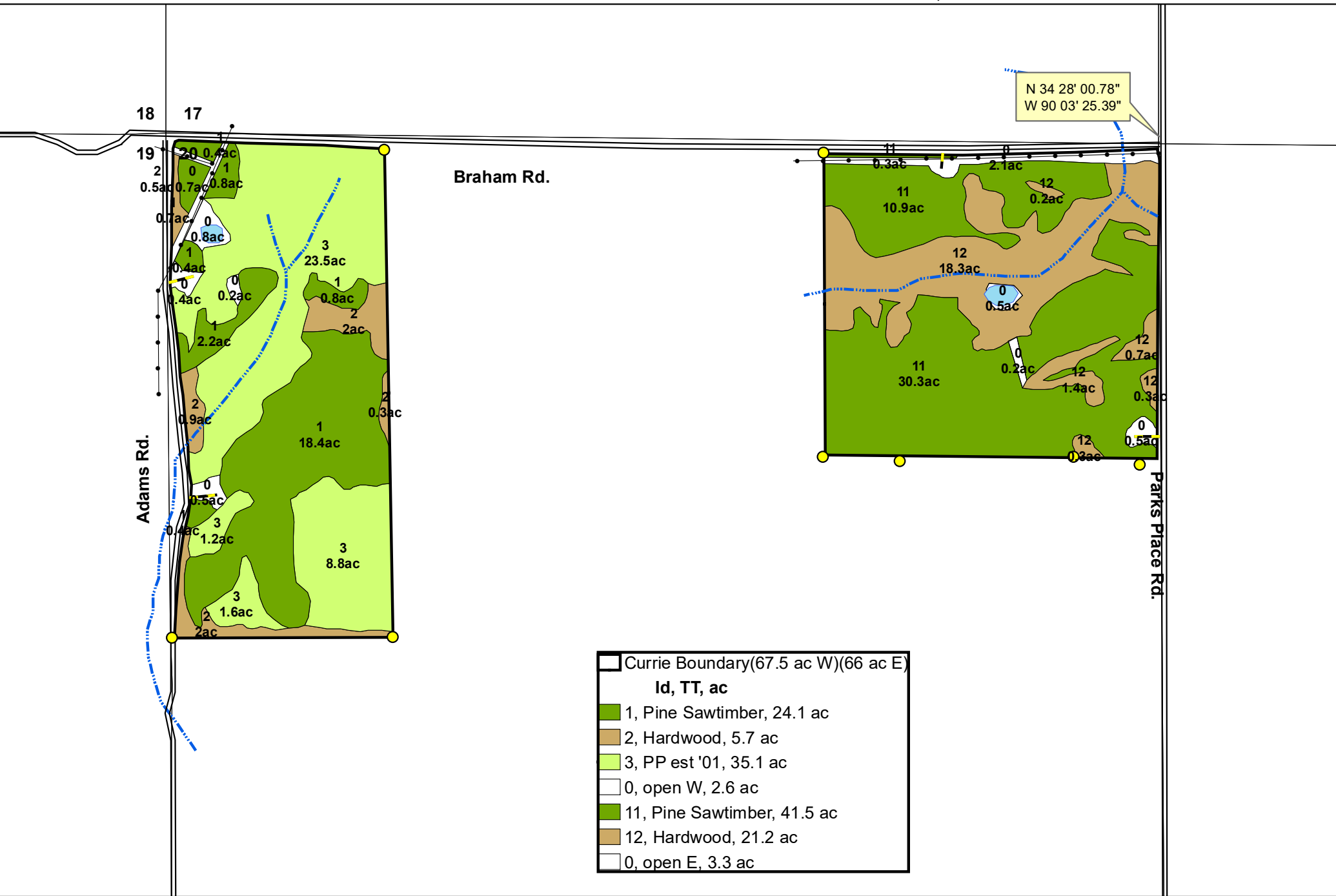


Francis C. Currie Marital Trust  
 Pt NW1/4 & Pt NE1/4 Sec.20 T7S R8W Panola Co.,MS



	Currie Boundary(67.5 ac W)(66 ac E)
<b>Id, TT, ac</b>	
	1, Pine Sawtimber, 24.1 ac
	2, Hardwood, 5.7 ac
	3, PP est '01, 35.1 ac
	0, open W, 2.6 ac
	11, Pine Sawtimber, 41.5 ac
	12, Hardwood, 21.2 ac
	0, open E, 3.3 ac



Scale 1:7920 (1" = 660')

Prepared by : Canale Forest Mgt. Co.  
 P.O. Box 1786  
 Oxford, MS 38655  
 (662) 236-5435